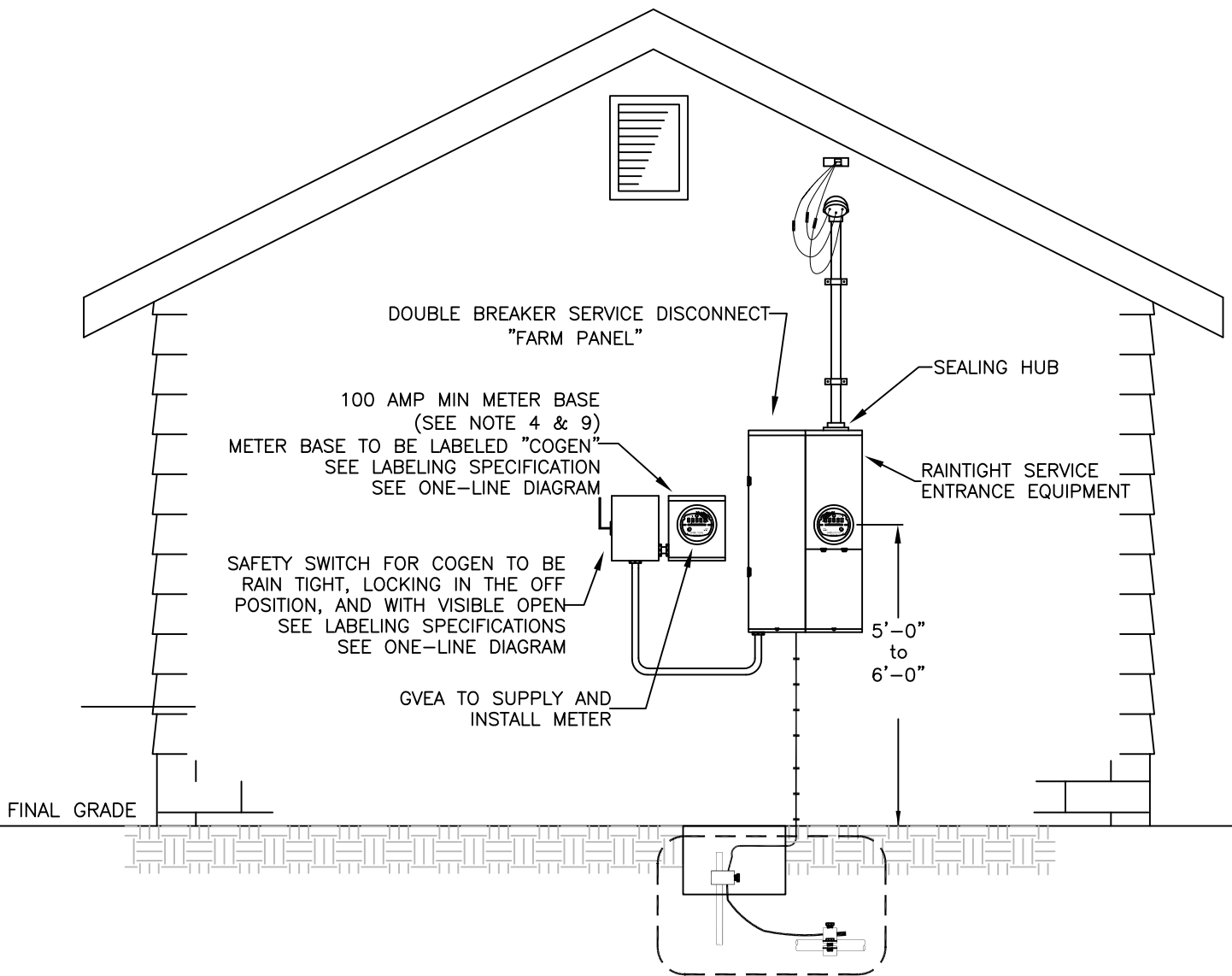


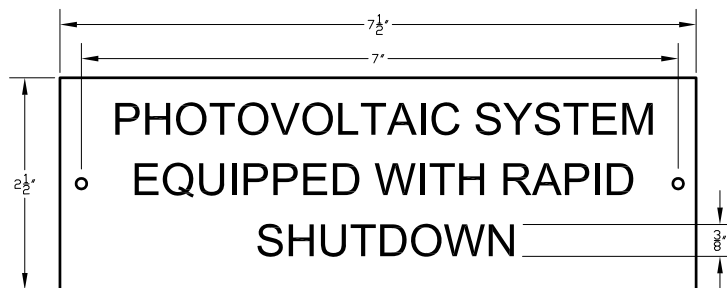
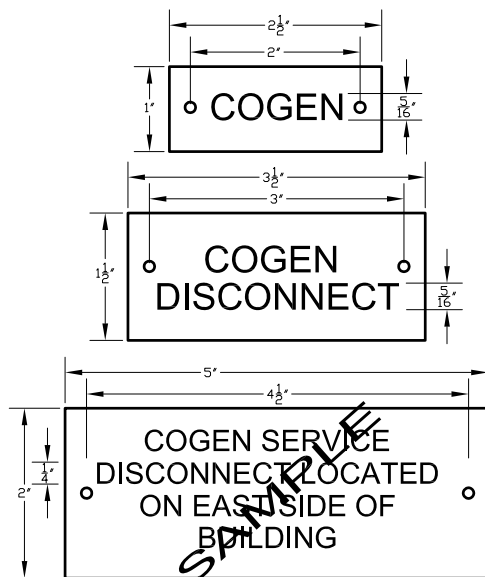
# SNAP PLUS (25 kW or less) Solar Option 2

## COGEN meter equipment connected to main service meter equipment



# SNAP PLUS (25 kW or less)

## LABELING SPECIFICATIONS



LABEL COGEN METER BASE  
LABEL SAFETY AND DISCONNECT SWITCHES.  
(SEE NOTE 8)

LOCATION: IF COGEN METER AND SERVICE ENTRANCE EQUIPMENT ARE NOT LOCATED ADJACENT TO EACH OTHER THEN A PLACARD OF THE LOCATION DISCRPTION MUST BE PROVIDED.

MATERIAL: 2-PLEX, 1/8" THICK, BEVELED EDGE, BLACK SURFACE WITH WHITE LETTERING.

LOCATION: IF RAPID SHUTDOWN AND SERVICE ENTRANCE EQUIPMENT MUST BE LOCATED ADJACENT TO EACH OTHER, THEN A PLACARD OF THE LOCATION DISCRPTION MUST BE PROVIDED.

MATERIAL: SHALL BE REFLECTIVE, 1/8" THICK, BEVELED EDGE, RED SURFACE WITH WHITE LETTERING.

LAYOUT: SIGN DIMENSIONS AND LETTER HEIGHTS SHALL BE AS SHOWN ABOVE OR AS APPROVED IN WRITING BY GVEA. USE 4H FONT OR SIMILAR STYLE. CENTER LETTERING ON PLATE.

NOT ALL LABELING REQUIREMENTS ARE LISTED HERE. ADHERE TO ALL LABELING REQUIREMENTS UNDER NEC ARTICLE 690 AND 705.

### NOTES:

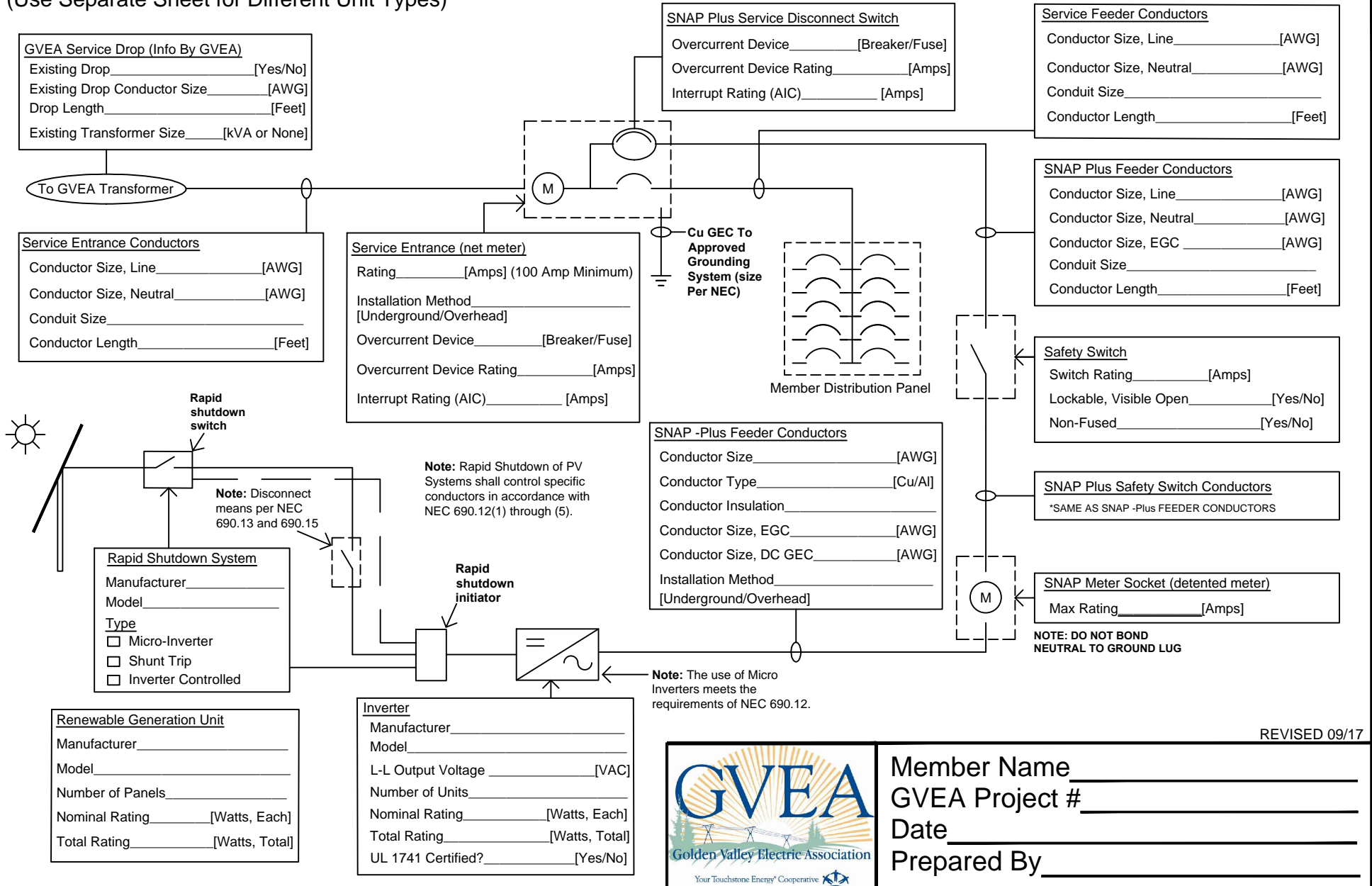
1. All grounding must meet current NEC requirements.
2. Conductors or cables under drivable areas shall be placed in RMC or IMC conduit. Equipment grounding conductor to a distribution panel is required. See NEC 250.32(B).
3. Conductor insulation shall be type XHHW or RHW.
4. Installation of SNAP service equipment shall adhere to all applicable national, state, and local construction and safety codes. Including applicable NEC requirements. Reference NEC Article 690.
5. A permanent plaque or directory, denoting all electrical power sources on or in the premises, shall be installed at each service equipment location. See NEC 705.10
6. The sum of the overcurrent protective devices for mulitple sources shall not exceed 120% of busbar rating. See NEC 705.12
7. To be approved for a connection to Golden Valley's system, the member's actual installation must correspond to a reviewed set of construction plans that shall be submitted on an "Electrical Load Data and Electrical Print" form. See page 3 of Golden Valley's "Electrical Service Requirements for Commercial and Multi-Residential Installations" Booklet or contact the Engineering Services Department.
8. Electrical disconnect switch energized from both sides shall be provided with placard indicating that all contacts might be energized, per NEC 705.22 (4).
9. The installation of a SNAP Plus system on facilities with a primary meter, non-self contained meter, or service entrance capacity over 200A requires the submission and approval of drawings prepared by a Professional Engineer licensed in Alaska.
10. SNAP Plus Photovotaic Systems must meet Rapid Shutdown requirements NEC 690.12 and 690.56.

# SNAP Plus One-Line Solar (Option 2)

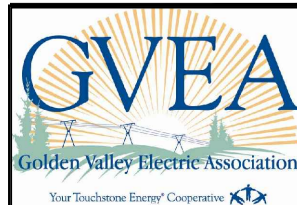
Provide All Applicable Information

Add Details for Additional/Optional Equipment (i.e. Transformers)

(Use Separate Sheet for Different Unit Types)



REVISED 09/17



Member Name \_\_\_\_\_  
 GVEA Project # \_\_\_\_\_  
 Date \_\_\_\_\_  
 Prepared By \_\_\_\_\_